

# DIFFERENTIAL PRESSURE GAUGES



- High pressure single diaphragm type
- Wetted parts stainless steel, steel or PTFE coated
- For gaseous, liquid, particulates-containing, viscous and aggressive media
- High static pressure and overload safety
- External zero adjustment on request
- Level measurement in closed tanks

**DPG01,  
High Pressure  
Single  
Diaphragm Type**

# DIFFERENTIAL PRESSURE GAUGES



- Low pressure capsule diaphragm type
- Wetted parts stainless steel and brass
- For gaseous & air
- Static pressure upto 10 times of range on request
- External zero adjustment on request
- Level measurement in closed tanks

**DPG02,  
Low Pressure  
Capsule  
Diaphragm Type**

# DIFFERENTIAL PRESSURE GAUGES

## APPLICATIONS

- Monitoring of filter contamination
- Level measurement in closed vessels
- Over pressure measurement in clean rooms
- Flow measurement of gaseous and liquid media
- Control of pumping plants

## MEDIUM OF USE

To be used only for filtered air or gas. Usable maximum temperature limit is 100°C.

## SAFETY INFORMATION

The device is not internally over pressure or uncontrolled pressure flow protected. Read manual carefully before installation.

## HOW TO USE

A three way manifold valve must be installed with every differential pressure gauge as a safety device. Outlet of manifold valve should be connected to the inlet of the gauge by means of a pair of capillary.

## DESCRIPTION OF MANIFOLD VALVE

As shown in the sketch, 1 & 2 are inlet ports, 3 & 4 are outlet ports and 5 is for draining. A, B & C are High Pressure, Low Pressure and equalizing valves respectively.

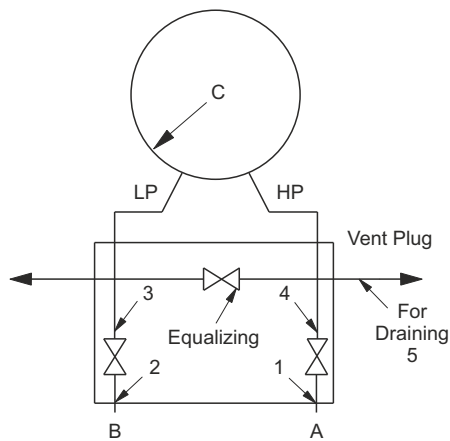
# DIFFERENTIAL PRESSURE GAUGES

## WORKING

- Close all 3 valves (A, B & C) to isolate the gauge from process
- Open only equalizing valve C
- Open valve B (on L.P. line) only to the extent that the pointer remains at zero with or without a little jerking
- Close valve C (equalizer valve)
- Open valve A (on H.P. line). You will find deflection of pointer from zero equivalent to the actual differential pressure

## SHUTTING DOWN DIFFERENTIAL PRESSURE GAUGE

A three way manifold valve must be installed with every differential pressure gauge as a safety device. Outlet of manifold valve should be connected to the inlet of the gauge by means of a pair of capillary.



Schematic Diagram

### ENQUIRES

Instruments: [sales@radix.co.in](mailto:sales@radix.co.in)  
 Sensors: [sensors@radix.co.in](mailto:sensors@radix.co.in)  
 Gauges: [gauges@radix.co.in](mailto:gauges@radix.co.in)  
 Automation: [automation@radix.co.in](mailto:automation@radix.co.in)  
 Level: [level@radix.co.in](mailto:level@radix.co.in)

### RADIX ELECTROSYSTEMS PVT LTD

EL-135/136/137, Electronics Zone, TTC Indl. Area, MIDC, Mahape  
 Navi Mumbai - 400 710, India  
 + 91 22 42537707 · [sales@radix.co.in](mailto:sales@radix.co.in)

DAT#236R1/