

SANITARY RTD WITHOUT PROTECTION SHEATH

RTD WITH SMS CONNECTION

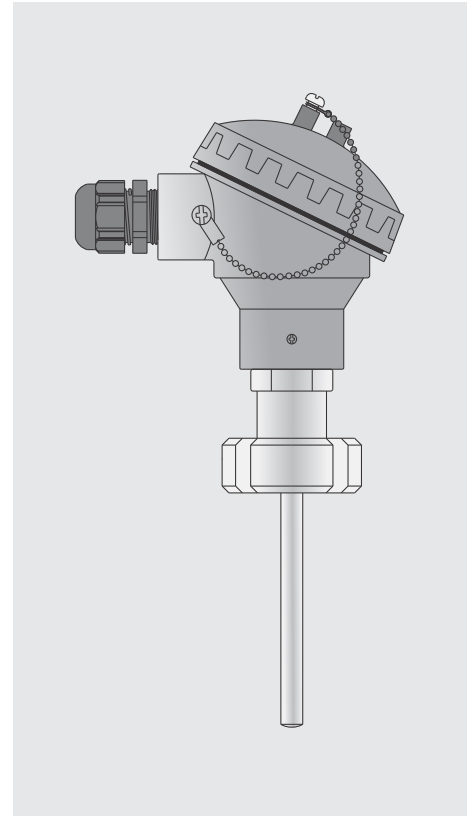
- Offered with Sanitary SMS Connection with / without male part and gasket
- SS316L material as standard for wetted parts
- Reduced tip design for quick response & to minimize flow restrictions
- Surface finishing $Ra \leq 0.6 \mu m$ as standard. Consult sales for better finish

APPLICATIONS

- Commonly used in food, pharmaceutical & chemical industries
- Measuring ranges : -50 to 250°C & -50 to 400°C
- Pressure range up to 40 bar
- Degree of protection : IP68

SPECIAL FEATURES

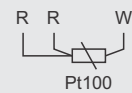
- Customized sheath lengths
- Reduced tip for faster response.
- Special aluminium & Stainless Steel connection heads optional
- With or without head mounted transmitters



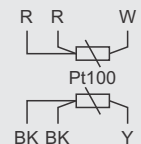
SENSORS AND HOUSING MATERIAL

Wetted parts	Stainless Steel 316L (1.4404)
Surface finish	Better than 0.6 micron for wetted parts
Non-wetted parts	Stainless Steel 304
Protection class	IP68
Sensing element	Pt-100, 3-Wire
Temperature range	-50 to 250°C & -50 to 400°C
RTD accuracy	Class A, as per IEC751
No. of elements	Single / Dual
Sheath diameter	6 / 8 mm
Process connection	SMS connection in 25, 38, 51, 63.5mm sizes
Transmitter	Optional
Cable Gland	Polyamide Gland

CIRCUIT DIAGRAM

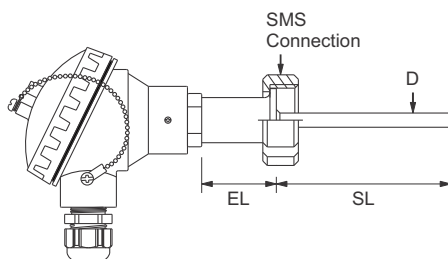


3-wire, single element



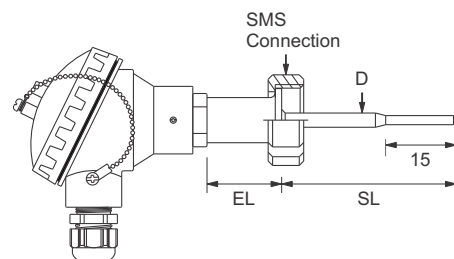
3-wire, dual element

MODEL : RHS700



WITH STRAIGHT TIP

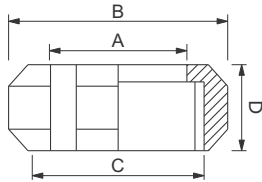
MODEL : RHS701



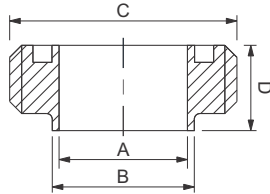
WITH REDUCED TIP

All dimensions are in mm, unless otherwise specified.

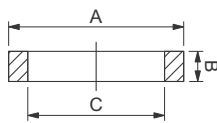
SANITARY RTD WITHOUT PROTECTION SHEATH



NUT, SS304



MALE PART, SS316L



SEALING RING - SILICONE RUBBER

CODE	SIZE	A	B	C	D
A25	25	32	51	RD 40 x 1/6	20
A38	38	48	74	RD 60 x 1/6	25
A51	51	60.5	84	RD 70 x 1/6	26
A63	63.5	74	100	RD 85 x 1/6	30

CODE	SIZE	A	B	C	D
MP25	25	22.6	25	RD 40 x 1/6	15
MP38	38	35.6	38	RD 60 x 1/6	20
MP51	51	48.6	51	RD 70 x 1/6	20
MP63	63.5	60.3	63.5	RD 85 x 1/6	24

CODE	SIZE	A	B	C
S25	25	32	5.5	25
S38	38	48	5.5	38
S51	51	61	5.5	51
S63	63.5	73.5	5.5	63.5

ACCURACY OF Pt100 AS PER IEC 60751

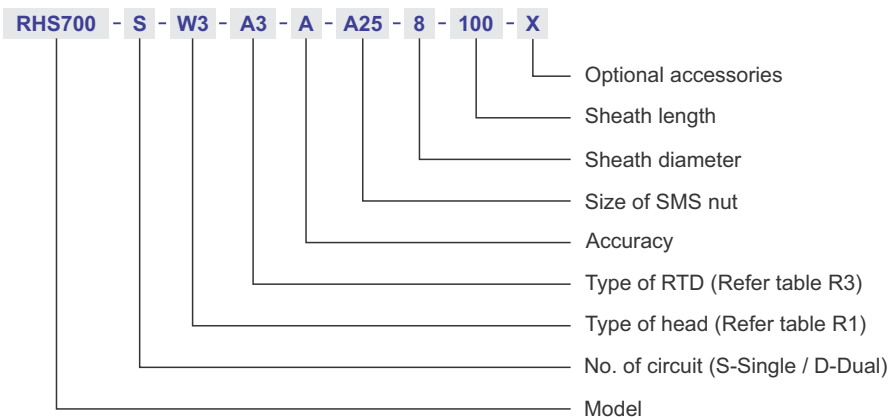
Pt100	A (1/2B)	AA (1/3B)
0°C (100Ω)	±0.15°C/±0.06Ω	±0.1°C/±0.04Ω
100°C (138.5Ω)	±0.35°C/±0.13Ω	±0.27°C/±0.1Ω

RESPONSE TIME

Tip Dia.	Imm. Length	T _{0.5}	T _{0.9}
6 mm	50 mm	4 s	9 s

T_{0.5} and T_{0.9} shows the response times at 50% and 90% of the step change. This data is measured by immersing the sensing bulb from ambient temperature to boiling water flowing at 0.4 m/sec. The result may vary according to the measuring environment and condition.

HOW TO ORDER



TERMINAL HEAD

TABLE R1

CODE	TYPE
W3	Standard weatherproof head (IP68) with thread cap & chain
W9	Weatherproof head with hinged cap
W5	Miniature head with threaded cap
W4	Sub miniature head
PP	Polypropylene head with threaded cap & chain
S7	SS head, IP68 with thread cap

REDUCED TIP

TABLE R2

CODE	TYPE
6R	6mm reduced to 3mm
8R	8mm reduced to 5mm

TYPES OF RTD

TABLE R3

CODE	TYPE
A3	Pt-100, 3 wire
A4	Pt-100, 4 wire

TERMINATION

TABLE R4

CODE	TYPE
FL	Flying leads
TB	Terminal block

Abbreviations : D - Sheath dia, SL - Sheath Length, EL - Extension Length

All dimensions are in mm, unless otherwise specified.