

## CONSTRUCTION

- Pt-100 sensor mounted into SS316L protection sheath.
- Sensor is mounted on weld-in boss or in thermowell.

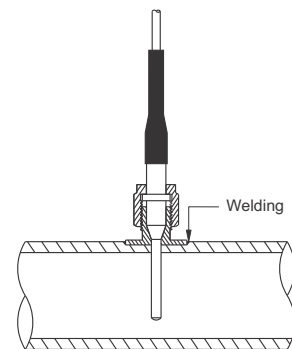
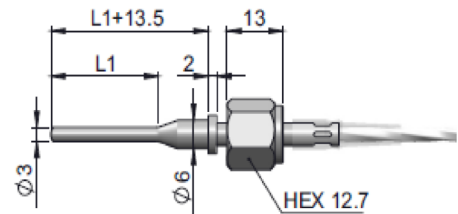
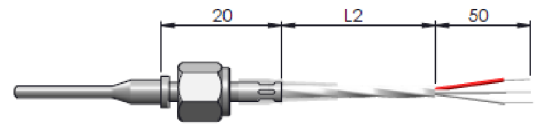
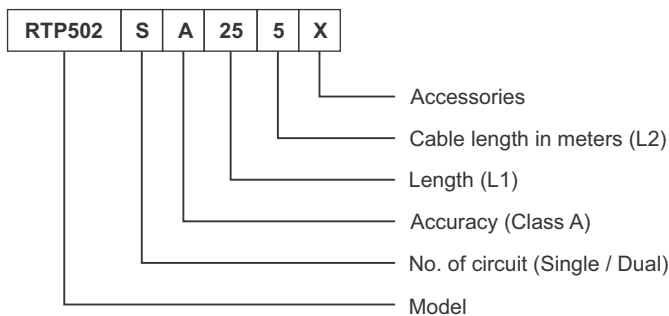
## APPLICATION

- Temperature measurements in tubes with hygienic requirements, e.g. in food industry.

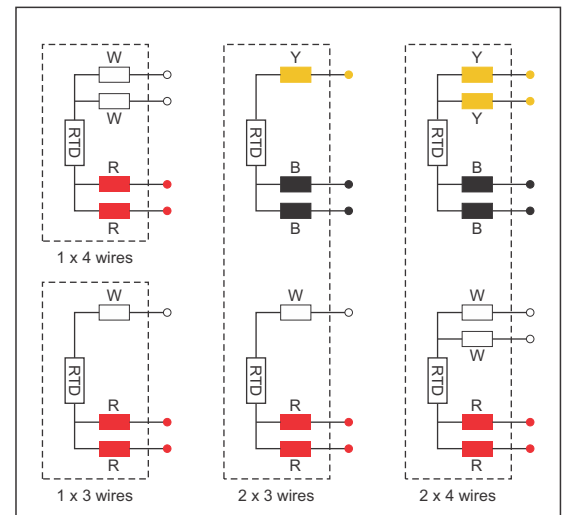
## SPECIFICATIONS

- Maximum temperature : Probe : 200°C, Cable : 200°C
- Accuracy : Pt-100 element, IEC 60751 Class A
- Process connection : G 1/8" for mounting to weld-in boss or thermowell
- Test certificate : output value at 100°C
- Surface finish : Wetted parts Ra ≤ 0.6
- Signal connection : PFA insulated cable with stripped / flying leads, 0.22mm<sup>2</sup>
- Designed for CIP / SIP
- Maximum temperature : 200°C

## HOW TO ORDER

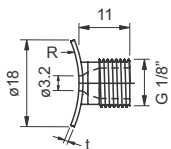


## COLOUR CODE - CABLE



## FITTING

### BOSS - SS316L (1.4404)

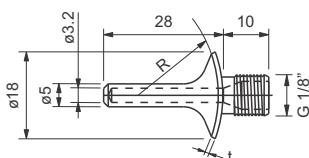


With curved base  
Order Code : BC

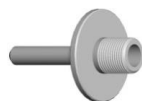


With flat base  
Order Code : BF

### THERMOWELL - SS316L (1.4404)

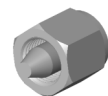
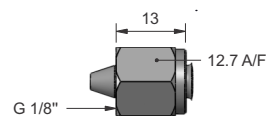


Flange with curved base  
Order Code : TC



Flange with flat base  
Order Code : TF

### DUMMY PLUG - SS316L (1.4404)



Order Code : DP

Subject to change without prior notice

Consult sales for other MOC (Titanium etc.)